

# How to support local communities to become resilient?

**Sumesh Mangalasseri**

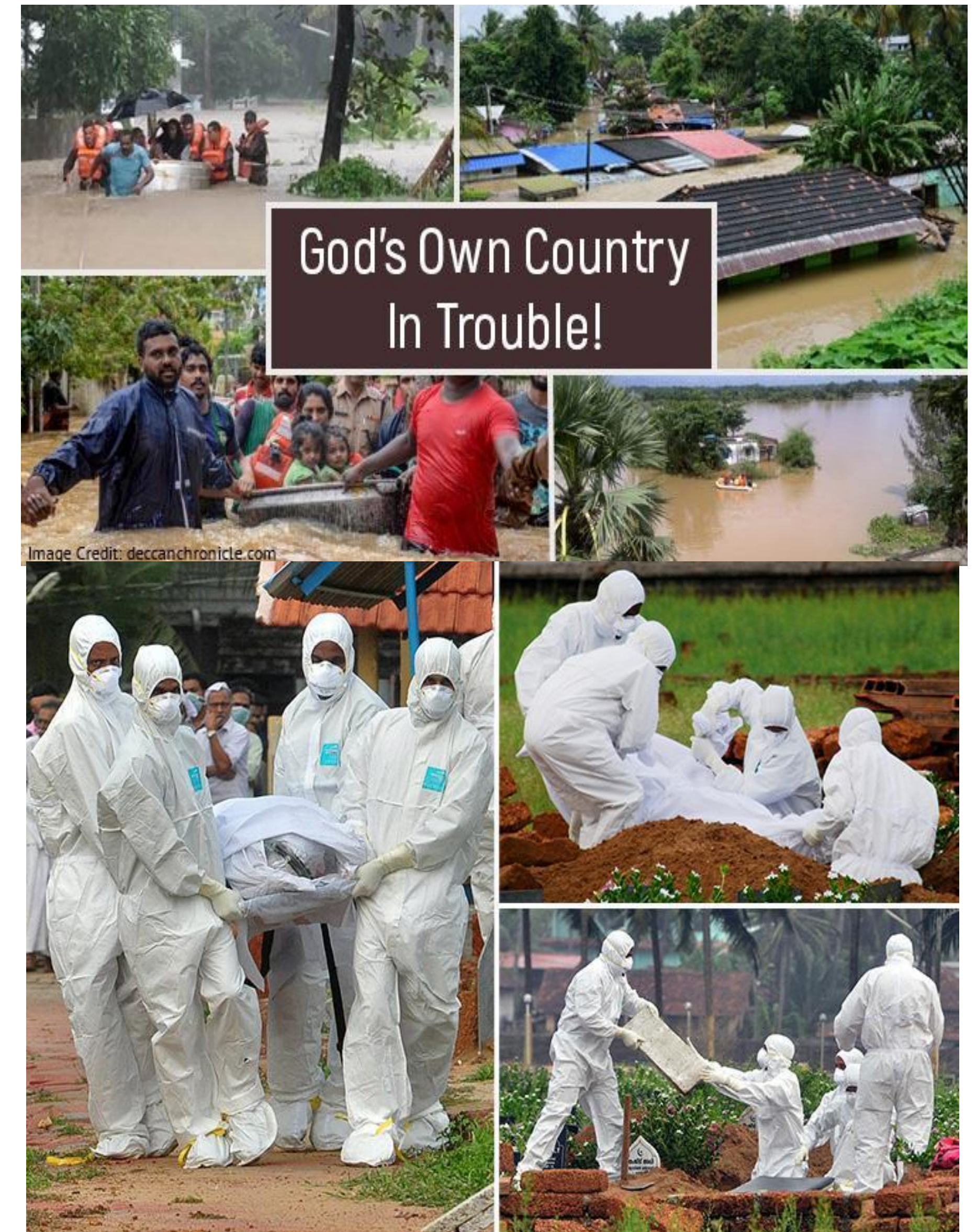


**Founder  
Kabani Community Tourism & Services  
India**



# Resilience and Tourism

- \* Past experiences questions the resilient nature of tourism and the current trajectory not offering much hope
- \* The facilitation of Kabani as an organisation is rooted in resilience
- \* Facilitated mechanisms: Diversify income opportunities
- \* Capacity enhancement as major component
- \* Traditional resilient practices as tourist attraction





# Diversified income

## Business as usual in unusual time

- \* Doing agriculture and developing more resilient practices
- \* Strengthening the model and entrepreneurship development
- \* Producer network and scaling through collaborations
- \* Capacity enhancement programs



Travellers visiting the project





# Consumer - Producer Network

Naambu - Naam Anpode - With Empathy

Joint farming by travellers and producers

Win - Win situation for both travellers and farmers

Tourism as a component of this programme

Need policy support

Market support



Harvet in village





# Thank you for listening

[www.kabantour.com](http://www.kabantour.com)



Kabani Community Tourism & Services